



**GALERIE
ITINERRANCE**

PRESS KIT

"PLAYTIME" SETH

GALERIE ITINERRANCE FROM FEBRUARY 6TH TO APRIL 11TH 2020

PRESENTATION

"PLAYTIME" SETH'S SOLO SHOW

After the success of his first two solo exhibitions at Galerie Itinerrance, Seth decides to reconfigure the premises for a new exhibition which mixes multiple creative supports. "Playtime", is an ode to creativity and play in an increasingly reasonable world.

During his many trips to paint walls, Seth has witnessed the incredible resilience of children everywhere. Whether in a school within a war zone in Ukraine or a favela plagued by the cartel war, children invent imaginary worlds to escape. Play, as well as learning about life, is often the easiest way to escape the implacable reality that surrounds them.

For this exhibition, Seth reinterprets some of his creations painted all over the world and tells us about the child who lies dormant in each of us. As he likes to say, his paintings are "doors that open onto imaginary worlds". They invite us to an introspection which will make us see, for a moment, the extent of our inner wealth.

We find there the Seth's recurring themes, his love for books, the toy as an escape tool, or even the nostalgia for a world that is disappearing. The vortex often remains present, everyone can see what they want: the passage to another dimension, the reflection of the imagination or a representation of the different degrees of consciousness. It embodies the richness of an interior universe which floods space, carries it towards a new world, like the rabbit burrow of Alice in the Wonderland.

OPENING IN PRESENCE OF THE ARTIST

THURSDAY FEBRUARY 6TH 2020 AT 6PM TO 9PM

PRESENTATION

"PLAYTIME" SETH'S SOLO SHOW



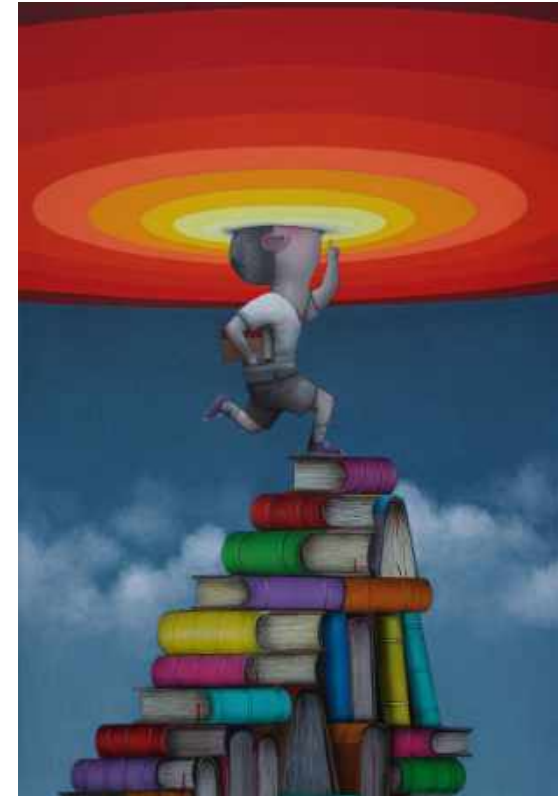
Le Petit Prince

Acrylic and spray paint on canvas
195 x 130 cm
2020



Le passe muraille

Acrylic and spray paint on canvas
195 x 130 cm
2020



Babel

Acrylic and spray paint on canvas
195 x 130 cm
2020

BIOGRAPHIE

SETH

Born in Paris, Seth began to express himself on the walls of his city in the mid-90s. His favorite terrain then was the 20th arrondissement where he became known in the graffiti environment by specializing in the production of characters.

A graduate of the National School of Decorative Arts, with Gautier Bischoff in 2000 he published the book Kapital, which remains the biggest success to date on French graffiti. They created a publishing house dedicated to urban artists, Wasted Talent in 2004.

Before being a full-time artist, Seth worked in the creative industries: in advertising, in cartoons, in comics. Back then he painted in the street for his own pleasure.

From 2003, he went on a trip around the world to interact with artists from different cultures, and open up to new ways of living and painting in urban areas. From this experience was born the book Globe Painter in 2007 and thereafter the documentary program Les Nouveaux Explorateurs broadcast and produced by Canal+ where Seth proposes to discover a country through the prism of his urban arts. For 5 years, he travels and shares 15 destinations which are rich in meaning.

During his artistic explorations, Seth developed a recognizable painting style by often working on childhood. He approaches the wall like a blank page, Seth draws on the imaginary, individual on the one hand or collective - local gods, myths, tales. The child becomes a spokesperson, a messenger of his questions. He brings into play his image of innocence and places his character in a difficult social, political, geographic context.

An approach that is often a double play but never cynical, an urban painting committed to alerting and advancing the state of the world.

After "Between Walls" in 2017, "Playtime" is the artist's third solo exhibition at Galerie Itinerrance.

PRACTICE

SETH



Seth's aesthetic is nourished by simple graphic lines, their sharpness evokes clear lines from the world of comics. Its precise lines and polished craftsmanship are accompanied by a choice of pastel colors close to the world of childhood.

Seth's engagement is less in confrontation with others than in accompanying the spectator towards reflection, interpretation and dialogue. The artist uses the soft lines and colors to give even more impact to his message.

True to the spirit of Latin American muralism, it is clearly and effectively addressed to the populations of the neighborhoods where it intervenes to better reach them.

The figure of the child as the main subject of his works allows Seth to express himself on a universal level. The child represents a form of innocence not yet tainted with the codes of our modern society. As if in direct contact with reality, Seth seeks to show the breadth of imagination that children can demonstrate. Wherever he goes, this creativity remains palpable, each time linked to their traditional culture, that which precedes a culture standardized by globalization.

The artist seeks to highlight local traditions by inserting their symbols in his paintings. He does not seek so much to anchor us in a tradition, but rather to seek in us feelings which have to do with universal notions: it is our humanity that he comes to reveal!

HIS LAST PROJECTS



"Popasna", Ukraine, 2019



"Le passe muraille", Marché
des Batignolles, France,
2019

HIS LAST PROJECTS



Institut culturel Bernard Magrez,
France, 2019



Université de Chosun,
Corée, 2019

HIS LAST PROJECTS



"Made in Haiti",
Haiti, 2019



Boulevard Paris 13,
France, 2019

PRESENTATION

GALERIE ITINERRANCE

Galerie Itinerrance, which opened in 2004 in the 13th district of Paris, is part of an urban field in full cultural expansion.

In its shows, Galerie Itinerrance combines traditional canvases and installations. This exhibition scenography is a way to invite they visitors to live an immersive experience that extends the universe developed on canvases hung on the walls. Since its opening, many French and international artists, such as Bom.K, Borondo, Brusks, Btoy, David of the Mano, Ethos, Inti, M-City, Maye, Pantonio, Roa, Sainer, Seth, Shoof, or Wise 2 have been showing their work in the gallery. These exhibitions are an opportunity to present the work the public is used to see in the public space on different mediums and formats.

Itinerrance can also be seen «Outside of its walls». At the initiative of the BOULEVARD PARIS 13, curated artistic pathway established in the 13th district of Paris and after the ephemeral exhibition TOUR PARIS 13 (TOWER PARIS 13), the gallery developed new concepts of artistic experiences, first with the open air museum DJERBAHOOD in Tunisia in 2014, then with EARTH CRISIS, Shepard Fairey's eponymous installation on the Eiffel Tower in 2015 and more recently the STREAM project on the quays of the famous parisian river.

OPENING IN PRESENCE OF THE ARTIST

THURSDAY FEBRUARY 6TH 2020 AT 6PM TO 9PM

GALERIE ITINERRANCE

24BIS BOULEVARD DU GÉNÉRAL JEAN SIMON, 75013 PARIS
Subway Bibliothèque François Mitterrand / Tramway Avenue de France
+33 1 44 06 45 39

EXHIBITION "PLAYTIME" / SETH

FROM FEBRUARY 6TH TO APRIL 11TH 2020
Tuesday- Saturday
1AM - PM / Free Entrance

CONTACT PRESS

Gina De Fazio
gina@itinerrance.fr
+33 6 86 90 75 54