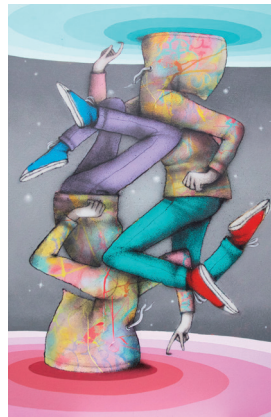




**GALERIE
ITINERRANCE**

SETH SOLO SHOW «WALKING ON A DREAM»

PRESS RELEASE / MARCH 6TH 2015



WALKING ON A DREAM
SETH

OPENING IN PRESENCE OF THE ARTIST
FRIDAY MARCH 20TH AT 6PM
with our partners Grolsch and Infusion

Grolsch

INFUSION
ICED HERBAL TEA

The Globe Trotter Julien Malland aka SETH is exhibited from March 20th to April 25th at the Gallery Itinerrance for a Solo Show «Walking on a Dream» which combines urban culture, poetry and fantasy.

After passing through Djerbahood, Italy, Shanghai or Puerto Rico, Seth, the globetrotter artist is always looking for new human and artistic events will stay at the gallery on the 20th March to show us his latest creations.

“Globe-Trotter”, Seth reflects what he sees during his travels: local customs disappearing as direct a consequence of globalization... Working with local artists has enabled him to learn traditional techniques from artisans and his approach has always intended to create a dialogue by speaking directly to the local population.

The artist points the finger at the social, political and cultural issues in the places he crosses by using the beauty and simplicity as weapons to get his message across. Seth's childish characters will always carry us in a dreamlike and poetic universe which ironically happens to be closer to the reality of the locals.

The choice to represent children, as we all were once, is a way for the artist to express a universal subject, understandable by all. The child, in Seth's work, is a symbol of purity, innocence which contrasts with the chaotic places where they are painted.

Knowing well how to adapt himself to its environment, Seth is now adapting himself to the canvas. He is playing with materials, mixing in spray paint and acrylic; by making references to his history with the graffiti movement adding elements in relation to the “street” to his paintings (walls, tags, clothing ...). His characters meet and mingle always avoiding to look at the public: half here, half elsewhere. The work with the bomb (spray) gives a dynamic which contrasts with their inaction bringing to the canvases a special energy.



SETH SOLO SHOW / ITINERRANCE GALLERY

7 BIS RUE RENE GOSCINNY 75013 PARIS

20TH MARCH - 25TH APRIL 2015

Open Wednesday to Saturday / 2PM - 7PM

PRESS CONTACT

MARIE BARNOIN

+33 7 77 72 75 47

marie@itinerrance.fr